

ABQ Casita, LLC Guest Manual

Revised 24-10-2024



209 ½ Wellesley DR SE
Albuquerque, NM 87106

[HTTPS://ABQCASITA.COM](https://abqcasita.com)

NOTE! NOTE! NOTE!

The casita is **BEHIND** the main house
between the garage and the alley with its own
driveway!

Some people mistakenly try to access the main
house which is on Wellesley.

This page intentionally blank

Welcome!.....	4
Directions.....	5
Directions from Albuquerque International Sunport (ABQ).....	5
Directions from “The Big I” (the intersection of I-40 and I-25).....	6
Contact Info.....	Error! Bookmark not defined.
Check-In	9
History.....	10
EMERGENCIES - 911.....	10
Hospitals.....	10
First-Aid kit.....	11
FIRE EXTINGUISHERS.....	11
GAS LEAK.....	11
SMOKE ALARM.....	11
Rendezvous Assembly Point	11
WATER HEATER / WATER MAIN LINE SHUTOFF	11
SECURITY ALARM PAD	11
Pets	12
Electric Vehicle EV Charger	12
Heating and cooling	14
Gas Fireplace.....	14
WiFi/Internet Access.....	15
Laundry	15
Television	15
Kitchen	16
Dining Table	16
Guest Bedroom.....	17
Outdoor Grill	19
Bicycles.....	19
Trash Bins.....	19
Check Out.....	21
See you next time!	22

Welcome!

THANK YOU FOR CHOOSING OUR CASITA
(Spanish for “little house”) / GUEST
HOUSE FOR YOUR HOME AWAY FROM
HOME.

ALBUQUERQUE'S NOB HILL DISTRICT IS
ONE OF THE MOST POPULAR
DESTINATIONS FOR DINING AND
SHOPPING.

WE LIKE TO CALL IT THE DESTINATION
FOR URBAN HIKING!!

PLEASE LOOK OVER THE INFORMATION
IN THIS GUEST MANUAL IN ORDER TO
FAMILIARIZE YOURSELF WITH THE
GUESTHOUSE.

THANKS! HAVE A GREAT STAY.

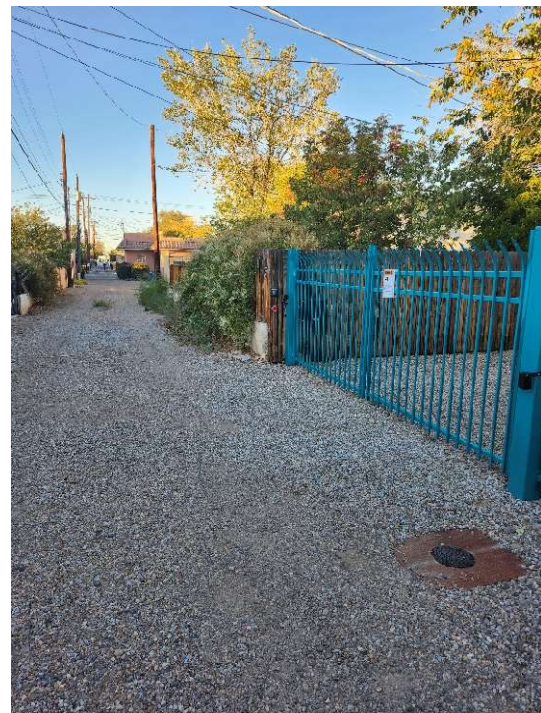
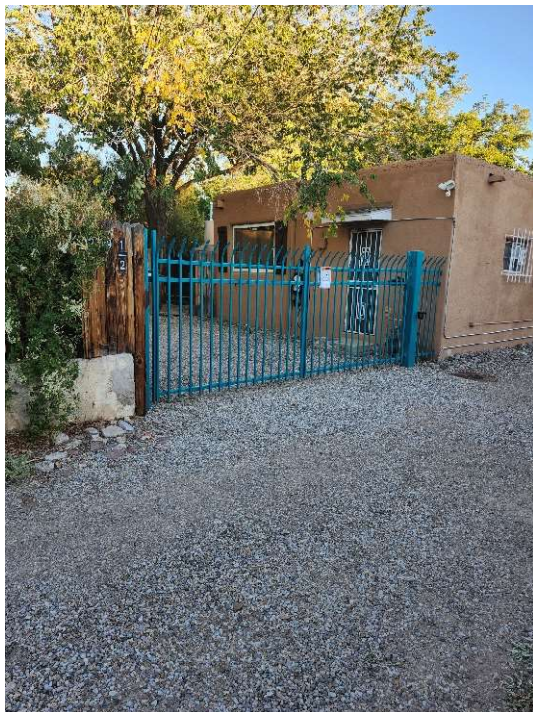
Please Note: The hosts live onsite in the larger house that faces Wellesley.

ABQ Casita (The Guest House) is off the alley behind the main house (where the hosts reside) and the garage.

Directions

Albuquerque has wide open spaces, and beautiful skies. In general, the city is laid out into four quadrants with streets running North-South and East-West. When looking for an address, it is important to note the quadrant designation NE, SE, NW, and SW. The dividers for the quadrants are roughly Central Avenue (Route 66, post 1937) and I-25 (not entirely accurate, but works as the East-West divider). From nearly anywhere in Albuquerque, you can see the Sandia mountains which are northeast of the city and are a good point of reference. To the west, you can see three small volcanoes close to the city and a very large volcano past them that is 60 miles away (Mount Taylor in Grants, NM).

The rental unit is in the back yard and has its own driveway accessible via the alley that runs North-South from Lead Ave and Silver midway between Wellesley Drive SE and Bryn Mawr Drive SE.



Directions from Albuquerque International Sunport (ABQ)

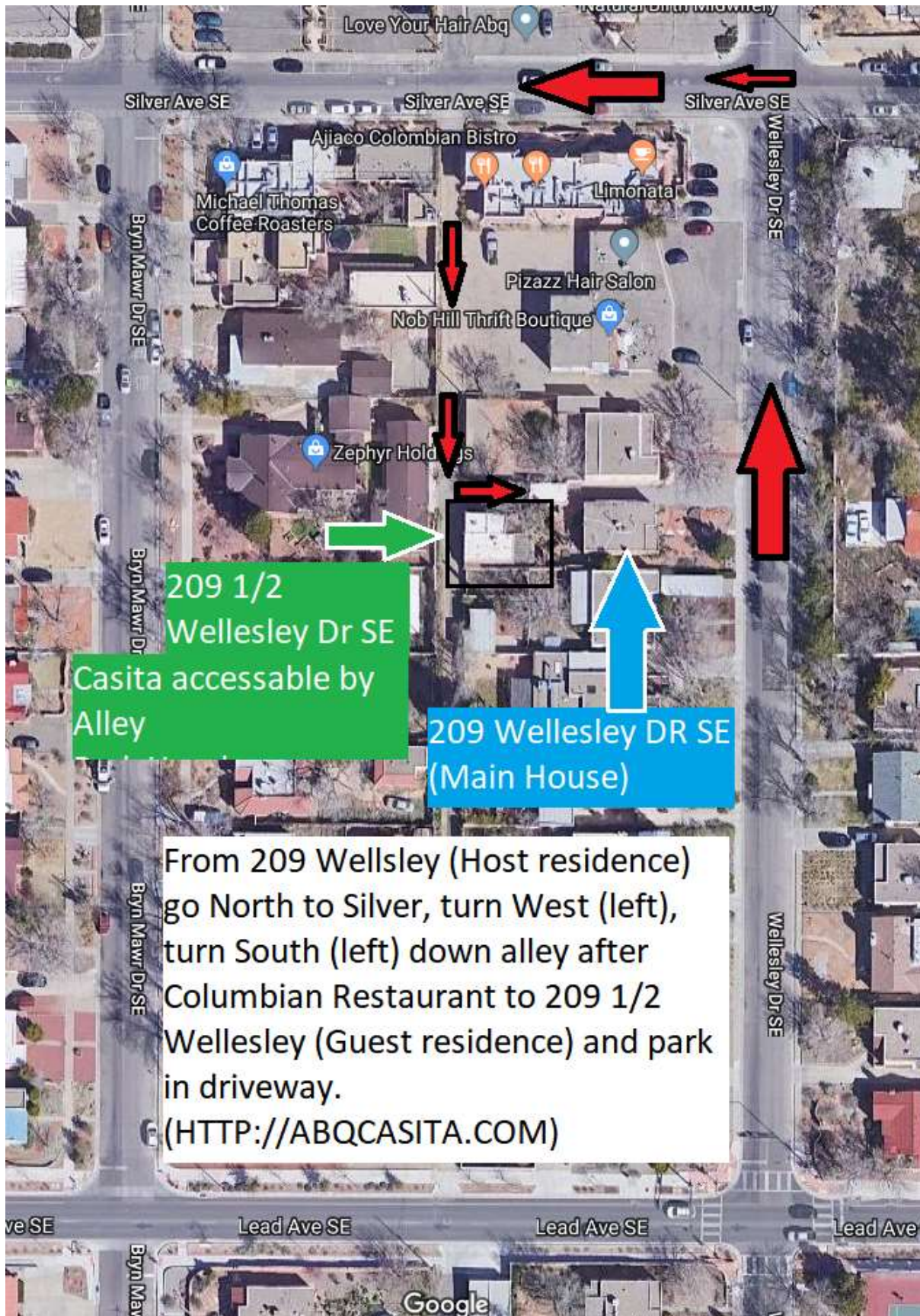
- 1) Follow signs from the airport to the Yale exit (alternatively, you may use Girard to the East or University to West, which is convenient from the car rental center) heading north.
- 2) Pass through Gibson headed north on Yale and continue another 1.2 miles to Coal Avenue
- 3) Turn right (East) from Yale onto Coal Avenue, which is a one-way road timed for 30 mph and is photo-enforced.
- 4) In less than a mile East of Yale, you will pass through the Girard and then Bryn Mawr stop lights.
- 5) The immediate street following Bryn Mawr (no traffic light) is Wellesley. Turn left (north).
- 6) You will proceed to a stop sign at Lead (Tennis courts on the right). Continue north.
- 7) The main house is at 209 Wellesley Dr SE where the hosts live, but the casita is behind it with alley access.
- 8) You may park on the street (not recommended) and walk past the main residence and the garage, or use your own parking spaces that are accessible from the alley and secured behind a turquoise-colored gate.
- 9) If you choose to use the alley access,
 - a. Continue past 209 Wellesley to the stop sign at Silver
 - b. Turn left on Silver passing a coffee shop and a restaurant to an alley on the left.
 - c. Turn left down the alley past a 2-story back of a small strip mall, past one house, and turn left into parking space marked for Guests of 209 ½ Wellesley.
 - d. As a point of reference, there is a turquoise-colored electric gate. If travelling at night, the motion sensor lights will activate. Enter the four-digit code given to you followed by the pound sign (#) to open (or close) the gate. Inside the casita, you will find a pair of remote controls for the gate.
 - e. Park in the alley driveway and enter through the wooden gate.
 - f. The entrance is from the patio on the East side of the casita.

Directions from “The Big I” (the intersection of I-40 and I-25)

These directions are not the fastest, but are the simplest.

- 1) Note: if traveling north bound from I-40, do not proceed all the way to Big-I, instead, take the Lead-Coal exit immediately following the Gibson exit.
- 2) Go south on I-25 from the Big-I past the Lomas and Central exits looking for the Lead-Coal exit to get off the freeway, staying in the left-hand lane.
- 3) The first traffic light is Lead, which is a one-way that leads West, continue through the light (do not turn on Lead) to the next light, which is Coal Ave.
- 4) Turn left (East) on Coal Avenue, which is a one-way road timed for 30 mph and photo-enforced.
- 5) Follow Coal for a mile to Yale Blvd and continue on Coal past Yale.
- 6) In less than a mile from Yale, you will pass through the Girard and then Bryn Mawr stop lights.
- 7) The immediate street following Bryn Mawr (no traffic light) is Wellesley. Turn left (north).
- 8) You will proceed to a stop sign at Lead (Tennis courts on the right). Continue north.
- 9) The main house is at 209 Wellesley Dr SE where the hosts live, but the casita is behind it with alley access.

- 10) You may park on the street and walk past the main residence and the garage, or use your own parking spaces that are accessible from the alley and secured behind a turquoise-colored gate.
- 11) If you choose to use the alley access,
- a. Continue past 209 Wellesley to the stop sign at Silver
 - b. Turn left on Silver passing a coffee shop and a restaurant to an alley on the left.
 - c. Turn left down the alley past a 2-story back of a small strip mall, past one house, and turn left into parking space marked for Guests of 209 ½ Wellesley.
 - d. As a point of reference, there is a turquoise-colored electric gate. If travelling at night, the motion sensor lights will activate. Enter the four-digit code given to you followed by the pound sign (#) to open (or close) the gate. Inside the casita, you will find a pair of remote controls for the gate.
 - e. Park in the alley driveway and enter through the wooden gate.
 - f. The entrance is from the patio on the East side of the casita.



209 1/2
Wellesley Dr SE
Casita accessible by
Alley

209 Wellesley DR SE
(Main House)

From 209 Wellsley (Host residence)
go North to Silver, turn West (left),
turn South (left) down alley after
Columbian Restaurant to 209 1/2
Wellesley (Guest residence) and park
in driveway.
([HTTP://ABQCASITA.COM](http://abqcasita.com))

Check-In

Lock Box Code: (subject to change, check your email / txt messages)

Front Door Code: (same as lockbox code)

Electric driveway gate (Same as lockbox), followed by the pound sign (#). Note that two gate remote controls are provided that will both open and close the gate. Of course, this doesn't help you on your arrival as the remotes are in the casita.

Alarm Code: (Same as lockbox)

Check-in is set at 3:00 PM, but we may be able arrange a different time depending upon the schedule of other guests and our availability to ensure that the guest house has been cleaned and is ready for your stay.

You may check yourself in, but we would be happy to meet you, give you a key, and show you around.

The front, metal, outside door on the East side of casita and on a patio has an electric keypad on it that is hard to see at night. Use the topmost button to light up the keypad. Enter the 4-digit front door code. The lights should remain green as you enter the proper code and will turn red otherwise. If you enter the wrong code, continue pressing digits until you have pressed 4, and then try the procedure again after a couple of seconds. After you enter the code properly, a green light will come on and you may use the handle to open the door.

Behind that door, is a standard, inner, wooden door which is usually unlocked. The inner door has a deadbolt and doorknob, both of which may be locked using the key to the casita (which has a maroon color code on the key).

If you need the casita key, there is one in the lockbox to the right of the door. Pull down the plastic door to expose a four-digit set of tumblers. Enter the code and slide down the plastic black tab to the left of the digits. This will open the container that holds a casita key (the inside wooden door), and a key to the outside metal door. NOTE: MOST PEOPLE DO NOT USE THE PHYSICAL KEYS AND DO NOT LOOK THE WOODEN DOOR. SOME PEOPLE HAVE LOCKED THE KEYS IN THE HOUSE.

NOTE: The metal, outside door will not close itself automatically. However, people have accidentally closed the door leaving their access code locked inside the casita. Please memorize the 4-digit code.

History

WELCOME TO OUR GUESTHOUSE IN HISTORIC NOB HILL!

The original building that is now the guesthouse was built in 1936 along with the main house. At the time it was built, the current bedrooms did not exist, and were added some time after. However, because they are built with the same type of construction materials, they must have been added during the same period. The exterior walls of the guesthouse are constructed of fired red clay blocks, hollow celled, like concrete blocks today. The oak floors are original to the house.

The original bathroom was in the back corner of the house where the tub and glass block window is now. Its footprint was about five-foot square. The kitchen was next to it. The kitchen sink used to be under the window that is now the window in the new bathroom. The wonderful wood shelf is from a tree that previous owners Frank and Linda Casanova harvested (it was dead a long time) from their home in the Jemez Mountains along the Jemez River. It is a species of juniper and the two dead trees they harvested were each about two to three feet in diameter.

The kitchen extended to the wall where the master bedroom door is (that was the original back door from the kitchen. There was no hall way to the current bathroom or master bedroom. Yes, to go to the bathroom or the bedroom, you had to go through the kitchen.

Over the years, modifications were made to the guesthouse, and in 2012, Frank and Lina Casanova decided the little house needed a major remodel. They gutted the existing bathroom and kitchen, tore down some walls, updated the electrical and plumbing, built the new bathroom, new kitchen, hallway, closet for the laundry and storage, and installed the gas fireplace/heater in the living room. They left as much of the older construction as possible, including the wood beams and ceilings in the living room and kitchen (not original to the original building, but a nice addition) and the Saltillo tile floors in the bedrooms.

The present owners are committed to continue the updates the outdoor landscaping that were begun in 2012. Every spring, new flowers and vegetables are planted. It is our desire to make our little guesthouse as comfortable and fun as it can be for folks, just like you.

EMERGENCIES - 911.

Hospitals

Hospitals are nearby. The closest emergency room is at UNMH, New Mexico's #1 trauma center. It is located on Lomas Blvd in between Yale and Girard. Take Central West to Girard (from Wellesley), North (right) on Girard to Lomas, West (left) on Lomas. Emergency room entrance is on the right.

Alternatively, Presbyterian Hospital is located at Central and I25. Take Central or Lead West to Spruce (just before I-25). The emergency room is accessed from Spruce or Central.

First-Aid kit

If you have a medical emergency, call 911. There is a First-Aid kit by the front door underneath the maps and near the DVDs. Please let us know if you use this so we can be sure it is replenished for the next guests.

FIRE EXTINGUISHERS

If you have a fire call 911. There are three FIRE EXTINGUISHERS: One hanging on the inside kitchen wall, one by the gas fireplace, and one on the kitchen counter. There are also fire blankets hanging on the kitchen wall and on the outside wall near the grill.

GAS LEAK

If you smell gas or suspect a GAS LEAK, do not touch anything electrical, vacate the guesthouse immediately and call 911. The heaters, stove/oven, gas clothes dryer and water heater in the guesthouse all operate on natural gas. In addition to smoke alarms, there is also a carbon monoxide detector. Should any of these alarms go off, evacuate for your safety.

SMOKE ALARM

Frying foods, burning foods in the oven or stove top is the most likely reason for a SMOKE ALARM, but protect yourself first by evacuating. If you determine that there is no fire and only smoke, open all doors and windows and turn on the ceiling fans and the fan located on the microwave oven until the air is clear of smoke residue.

Rendezvous Assembly Point

In the event of a fire, the rendezvous assembly point is the corner of Silver and Wellesley (the Limonata Coffee Shop). A fire extinguisher is available in the kitchen, but do not risk people for property.

WATER HEATER / WATER MAIN LINE SHUTOFF

The WATER HEATER is located in an alcove to the left side of the refrigerator. To access it, you must pull the refrigerator straight out far enough in order to get to the alcove. The water heating setting is suitable for most, but can be adjusted. You'll want it hotter if you have multiple guests who bathe often and lower if you have children and are concerned about scalding. If you adjust the temperature, please let us know or return it to the medium center when leaving.

The WATER MAIN LINE SHUTOFF is located in the same alcove as the water heater. It is labeled for you, just in case you are having a water emergency. Shut the water off first, then call us.

SECURITY ALARM PAD

The SECURITY ALARM PAD is located on the hallway wall between the bedroom doors. While you are out and about, feel free to use the same four-digit code you were given to arm and to disarm. In order to set the alarm, all windows and doors must be closed. Press STAY to arm the alarm if you want that security while sleeping as this defaults the motion detectors. Press AWAY to arm the alarm if you are leaving. There are about 45 seconds to leave and close the front door after arming, or after opening the door to come in before the alarm will go off. Should the alarm go off by accident, enter your four-digit code into the security alarm pad. It will turn off the alarm. If the alarm begins beeping and the yellow trouble light comes on, to stop the beeping, enter the number 2, then let us know.

If the code is not successfully entered in the allotted time, the alarms will sound and we will be contacted by the monitoring service.

Parking (Crime)

You may know Albuquerque from binge-watching “Breaking Bad”. No, that’s not the real Albuquerque, but we do have issues. The biggest issue in our neighborhood is breaking into cars. Local restaurants do not have adequate parking and Wellesley and Silver are effectively their parking lot. Thieves know this and will (occasionally) break into cars parked on the street. Do not leave ANYTHING in your car.

We recommend using the driveway by the casita which is large enough to hold all but the biggest of vehicles. People have parked two regular sized vehicles, but that’s a tight fit. The ONLY complaint that we have ever received was from a person with a very large truck who had trouble dealing with a telephone pole near the driveway. Please make us aware if you would like to bring a very large vehicle as we have had one guest bring a large work unit and we were able to accommodate them in the “other” driveway.

The alley is not well-light and if you are walking, especially at night, please feel free to use the “other” driveway by the main residence to walk in and out of the property. Motion sensors should activate lights as you progress.

You will encounter the unhoused population and you will be pegged as a tourist and asked to donate. We have programs for these people but some decide not to avail themselves for various reasons. Any donation made directly to these individuals will likely only discourage them from getting real help.

Pets

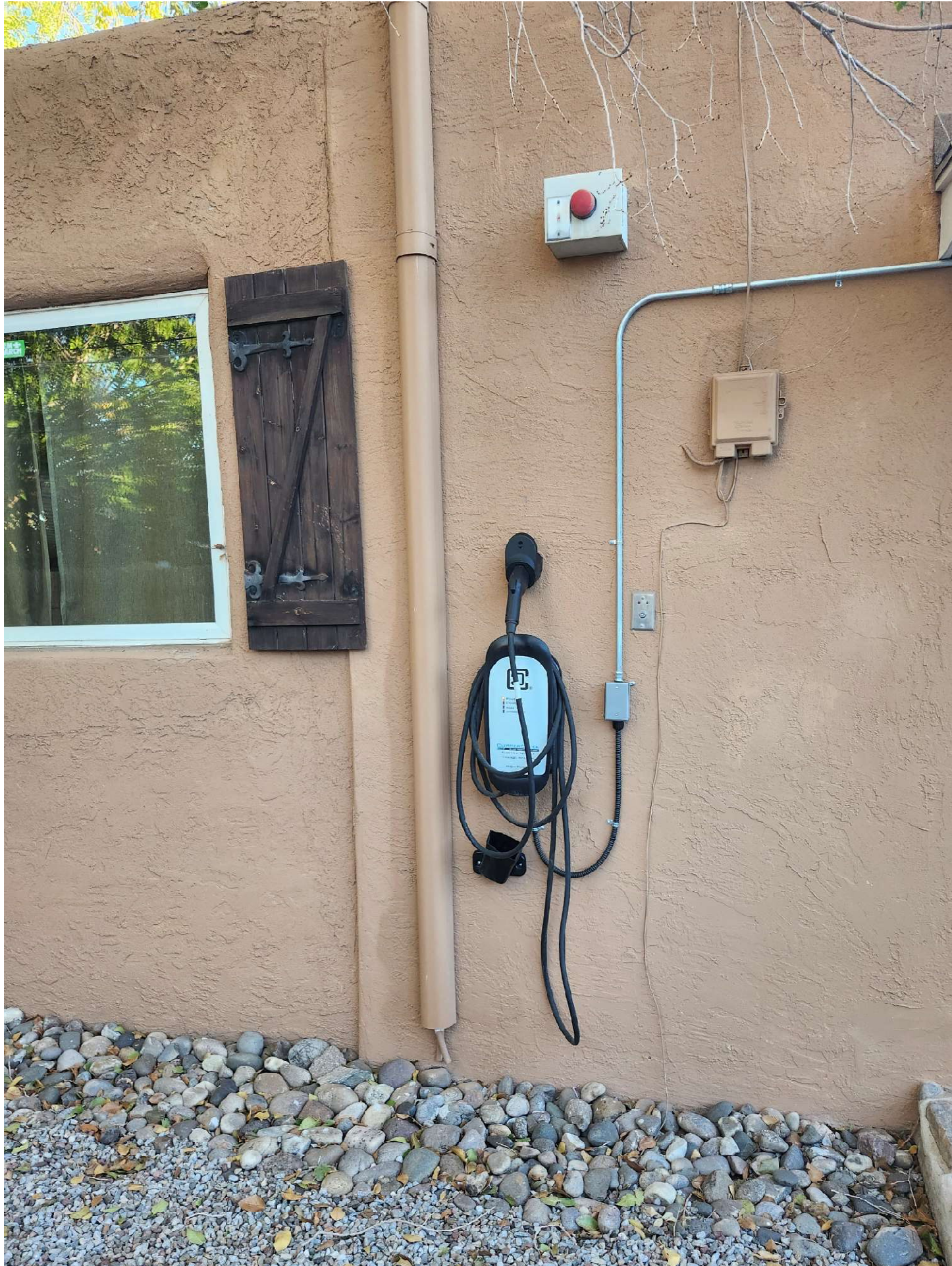
We love pets, but do not own any due to Terri’s allergies. Despite that, we keep a doggie station stocked in our front yard and doggie treats in our pantry. We cannot allow even the best-behaved, smallest animals, please don’t ask. The issue is that we advertise the residence as pet-free and some people are especially sensitive. We felt guilty asking a guest to cancel their reservation when they asked to bring a hamster. Be aware that our next-door neighbor feeds and even houses stray cats, so you may see them in transit occasionally. Don’t try to engage them. Despite my efforts, I’ve only managed to convince one of them to let me to pet him briefly.

Smoking

Smoking is not allowed. Again, some people are very sensitive and we advertise as being smoke free. Please respect this rule.

Electric Vehicle EV Charger

ABQ Casita is equipped with a fast charger. It is compatible with every mass production EV except Tesla. Fortunately, Tesla provides an adapter with each car, so please bring yours. The charge is a courtesy and there is no charge,... I mean fee. The electricity comes from the grid, but is replenished using solar panels. To charge, use the small brass key that hangs by the bike locks to release the small padlock on the charger.



Heating and cooling

Off/ON: There are three separate heating and cooling units (“mini-splits”) in the main room and the two bedrooms. These are operated using three corresponding remote controls. Each has an on/off switch.

Mode: You may set the mode using the mode switch to heat or cool, or use the Auto mode setting that will determine the need to cool or heat. There is also a DRY mode used for dehumidifying only.

Temp: Set the desired temperature up or down. The main unit will display the desired temperature.

Fan: Press the fan button repeatedly to change to high, medium, low speeds.

Please feel free to turn the units off or to adjust the temperature if you are gone for the day in order to conserve energy. Wanna get really crazy? There are buttons to delay ON (and OFF) in ½ hour increments so that the house will be comfortable when you wake or return.

There is a ceiling heater in the bathroom. The electrical switches are on the wall just to the right of the pedestal sink. The switches are labelled and the first switch is the light above the sink. The next switch is the light and ventilation fan in the ceiling, the third is the heater. All three can be on at the same time. Open the shades and drapes in the house and let the sun shine in! It’s Mother nature's heater.

The ceiling fans/lights in the bedrooms operate on the pull chain method. The FANS are very helpful in moving air, any time of the year. Please note that the master bedroom also has a switch BEHIND the door (bad choice) which must be on for the pull chain to be effective.

Gas Fireplace

The living room used to have a floor furnace, replaced by a metal 60's style wood-burning fireplace, which was replaced in 2015 with the new gas fireplace in the corner. The fireplace is not operational in the warmer months of the year (generally April to October). The pilot light is not on during the warm months of the year. We will have it turned on when the weather cools, around October. It is not a wood burning fireplace.

DO NOT ATTEMPT TO BURN WOOD IN IT. DO NOT LIGHT THE PILOT. WE WILL HAVE A QUALIFIED SERVICE PERSON INSPECT AND SERVICE IT FOR THE SEASON AND TURN THE PILOT ON.

Please inquire if the unit is on, and if it has been serviced and if it is on then you can operate the gas log fireplace in the living room. A remote-control thermostat controls the fireplace. You will find the remote on the wall in the hall by the security control pad. It is NOT one of the white colored remotes. Complete instructions are included in folder in this manual, but the nickel tour is:

- 1) Use the MODE key (middle bottom) to go to THERMO mode (not the OFF nor the ON)
- 2) Adjust the temperature up or down as you desire using the up arrow and down arrow near the bottom of the touchscreen
- 3) Use the Mode button to turn it off.
- 4) You may remove the remote from the wall, but be aware that the control will read the temperature wherever the remote is placed

!!!SAFETY WARNING!!! Always turn off the gas log fireplace before leaving the guesthouse and before going to bed at night, since there is an active flame burning. Also note that it gets hot. Don't touch the fireplace or place things near on it or near it. If young children are present, it is recommended that you not use the gas fireplace.

WiFi/Internet Access

The ABQ Casita has its own internet service from Xfinity (cable) with approximately 200 MIPS of download and 25 MIPS of upload. (Fiber Optic is expected to be available in a few months!) You may attach to the supplied ethernet cable directly to the modem in the guest bedroom.

For WiFi, the SSID to use is AbqCasita_5G (or AbqCasita2.4G). The password is "n0bh1llr0cks" which is a variation of the phrase "Nob Hill Rocks", but without spaces, all lowercase, and using numbers as vowels. The "0"'s are zeros and the double "ll" are two lowercase letters "L". (November, zero, bravo, hotel, one, lima, lima, Romeo, zero, Charlie, kilo, Sierra)

In addition to xfinity, we use a local Internet Service Provider, Southwest Cyberport, who maintain a help desk at 505-232-7992 and help@swcp.com. Feel free to call SWCP for help and mention that it is the ABQCasita or Mantos account. However, because they don't have a direct relationship with Xfinity, they may be limited in what they can do for you.

Laundry

The washer and dryer are located in the utility closet at the end of the hall. There are hypo-allergenic, fragrance-free laundry products located in the hall closet. Please feel free to use these at no charge. PLEASE, LEAVE THE DOOR OF THE WASHING MACHINE OPEN TO AIR DRY AFTER USING.

Television

The television provides over 100 channels of over-the-air, free, commercial-laden channels. You may access these using the remote and pressing the ON/Off power switch to start. Use the "input" key to select TV to access over the air channels (press repeatedly to cycle through the Over-the-air, DVD player, and ROKU device). Use the volume and channel keys appropriately. Note: In the summer, the leaves of the driveway tree interfere with reception.)

The television also has a DVD player connected to it. Use the corresponding remote for the DVD player. There is a library of DVD for your use in the ABQ Casita. The DVD is physically connected to television, but you will need to use the "input" key on the television remote to select the DVD player (HDM1).

The television also has a ROKU internet streaming device connected to it. ROKU offers many streaming channels accessible via the internet (via the WIFI). Turn on the TV and use the "input" button to select the ROKU device (HDM2). Press HOME on the ROKU remote (small and purple). Many free services are accessible via the HOME menu. You may access many other services using the ROKU device, so please feel free to add them to the home menu.

NETFLIX, PBS, and SLING have been set up for your use. Some other services require a subscription, some of which you may already have or be eligible to receive. For example, some channels require that you have cable or direct-tv at home. You may enter appropriate subscription information to access these. For example, you may already have a NETFLIX account or HULU via amazon prime. You may

enter your account information to access these. Additionally, there are services for which you may pay. Please feel free to do so, but you may want to ensure that access is removed at the end of your stay in order to avoid charges that may be incurred by subsequent guests. If you change NEXTFLIX or SLING account info, please let us know so that we may reset it for the next guests.

Kitchen

The kitchen is available for your use. You are invited to use any consumables that you may find including coffee, bottled water, detergent, shampoo, propane, etc. This includes all vegetation that you will find growing in the garden(s) such as tomatoes, sage, apples, etc. All we ask is that if you use the last (or close to the last) of any of these that you either replace them or let us know so that we can do so for you or for the next guest. Please let us know of any issues regarding insects such as ants or cockroaches. We use a professional pest control service and rarely have issues, but we rely on our guests to report any sightings of live insects.

The KITCHEN is fully equipped with everything you will need for preparing snacks or full meals, including baking. There are basic condiments, spices, etc. for your use. If it is there and you need it, use it. The tap water is absolutely safe to drink, however, we installed a filtered faucet for drinking and cooking. It is the small faucet on the left of the kitchen sink. Please feel free to explore, and use whatever you wish in the kitchen. There is also a filter-pitcher in refrigerator.

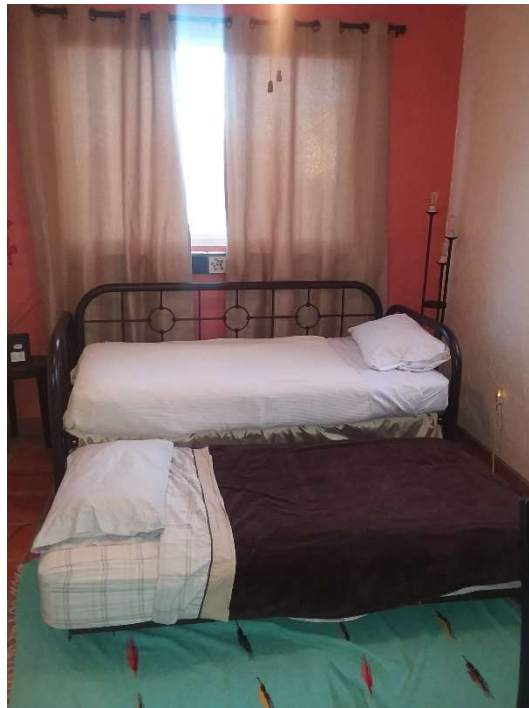
Dining Table

As you walk in, you will notice a table on the left underneath a window as you enter the casita and walk towards the kitchen. The table also opens to almost double its size. Feel free to rearrange the furniture. We find that you can move the sofa back towards the window away from the TV and move the trunk normally used to store blankets and used as a footrest while watching TV to make room for the table. Move the table between the sofa and the TV. You will find four wooden foldout chairs in the guest room closet. If you need more chairs, please let us know as we have two more matching wooden ones as well as some plastic folding chairs in our house.

Guest Bedroom

The guest bedroom has a day bed which is suitable for use as a couch for reading. You may use the daybed as a twin bed.

Underneath the day bed is a trundle bed which may be lowered or raised.



You will also find a kit in the guestroom closet that can be used to turn the two twin beds into a “small king” sized bed. You will find a foam strip that goes in between the two mattresses and has some loops that hold a strap that goes around both mattresses. Put the straps around both mattresses, being sure to go through the loops on the center piece. Cinch up the strap and secure using the Velcro which is part of the strap. Place the king-sized mattress pad over the two mattresses. Use the king-sized sheet set and comforter.



Outdoor Grill

Using the outdoor grill is not only fun, but can keep the kitchen cool. Please keep the fire extinguisher found in the kitchen at the ready and ensure that it is charged (green zone). It uses propane and not charcoal. We keep an extra tank in reserve, so please let us know if the first tank needs to be filled.

To use the grill:

- 1) Locate the fire extinguisher in the kitchen, check charge indicator is in the green, take outside.
- 2) Move the grill away from anything combustible (such as the wooden fence)
- 3) Remove the grill cover that is secured with Velcro tabs
- 4) Open the grill to ensure that nothing is there (clean with wire brush as necessary)
- 5) Turn the valve on top of the propane tank to the open position (counter clock-wise looking down onto the tank)
- 6) Open the hood.
- 7) Turn at least one of the three burners to the on / high position.
- 8) NOTE: If the gas has been on for more than a few seconds, do NOT attempt to start. Instead, turn off the burners, wait a few minutes and start again. Otherwise, you risk a gas build-up (propane is heavier than air and will settle in the grill) and an explosion.
- 9) Press the electric start. If the grill does not start within a few seconds, turn off the burners, wait a few minutes and try again.
- 10) Adjust the burners, close the hood, and wait for the thermometer to indicate readiness.
- 11) Use appropriate utensils, oven mitts, and other protective gear so that you enjoy your stay.

To shut off the grill

- 1) Turn burners to the off position
- 2) Turn off the gas on the propane tank (clockwise as looking down from the top)
- 3) Clean grill with wire brush
- 4) AFTER the grill has cooled, (even hours after), secure cover with Velcro tabs.
- 5) Return the grill from where you originally moved it.
- 6) Return fire extinguisher to the kitchen

Bicycles

If available, use the bikes at your own risk. There are four bikes and an extension for a smaller child to join in the fun. Locks and helmets are provided. The keys to the locks are located on the inside wall by the door in the living room. Helmets are in the front hallway behind the couch (or in the guest bedroom closet). The bikes are professionally tuned annually and believed to be safe, but please conduct your own inspection as they may have been damaged from previous use by another guest. Please make us aware of any issues with them. Bikes have been stolen when not locked properly, so please use the U-Locks wisely as the cable lock is notoriously easy to defeat.

Trash Bins

Larger trash bins are located by the garage just on the other side of the wooden gate that separates the ABQ Casita from the main house. One bin is blue for recycle and will accept most anything except glass

and pizza boxes. If you would like to compost, just use one of the compostable green bags under the sink and leave it for us as we compost at our residence.

Recycling Guidelines

- Do not place plastic bags in your blue cart.
- All approved items can be placed in the blue cart, including cardboard.
- Place your cart out at the curb no later than 7 a.m. on your regular pick-up day.
- Make sure that the front of the cart faces the street.
- Place your cart 5 feet away from all obstructions, including cars, poles, and additional carts.
- Please don't load your cart with more than 150 lbs.
- The lid of your cart must close with ease.
- If your cart is damaged or broken, missing or stolen, please call 311 for a replacement.
- Material left outside your cart will not be picked up.

Do Recycle

- Paper
 - Newspapers/Magazines
 - Junk Mail
 - Office Paper
 - Corrugated Cardboard
 - Cereal/Cracker Boxes
 - Milk and Juice Boxes
 - Phone Books
 - Books
 - Brown Paper Bags
 - Paper Egg Cartons
- Plastic
 - #1- #7 Plastics Bottle/Tubs
 - Rigid Plastic Toys/Hampers
- Metal
 - Aluminum Cans & Tin Cans
 - Foil & Pie Pans
 - Small Electronics
 - Pots & Pans
 - Small Appliances

Do Not Place In Cart

- Glass
- Garbage & Food
- Light Bulbs
- Wood
- Hazardous Waste

- Sharp Metal
- Yard Waste
- Batteries
- Motor Oil Bottles
- Medical Waste/Needles
- Styrofoam
- TVs & Computer Monitors
- Plastic Grocery Bags
- Wrapping Paper
- Ink Cartridges

Please place cart five feet away from trash cart. We will no longer accept recycling in clear plastic bags.

Glass is prohibited in the City Recycle bin, but we keep a black Rubbermaid box (with a yellow top) next to the recycling bin in which you may place glass for recycling.

Check Out

Check-out is at 11:00 AM local time, but if you need more time, please ask as we will certainly accommodate you as is possible without impacting the arrival of any subsequent guests.

A cleaning fee is included as part of your rental, so you are not obligated to go crazy cleaning after your stay. However, any help that you provide in this regard is appreciated. Please feel free to place used linens, sheets, etc. on the queen bed in the master bedroom. Please do NOT change the sheets as we would not know that you have and we would then wash them again as well.

- Please ensure that the three heating/cooling units are set to OFF and that the fireplace mode is OFF.
- Please ensure that all windows are closed and locked.
- Please engage all locks on all doors except on the front wooden door which should not have been locked on your arrival and that uses the keys in the lockbox. Closing the metal doors is sufficient to lock them. If you did remove the physical keys from the outside lockbox, please return them and jumble the tumblers after doing so.
- Please ensure that the bicycles are returned to their original position, locked (relying on the U-Bolts), and that the keys are returned to the hook on the wall by the door in the living room. Improper use of the U-Bolts and over-reliance on the security cables has resulted in stolen bikes and parts.
- If you happen to have adjusted the hot water temperature, please return the setting to normal/medium and/or let us know.
- If you charged your electric vehicle during your stay, please replace the padlock on the charger and return the key to the hook by the door next to the bike keys.
- Unless meeting us personally to check out, please return all keys (except bike locks keys and EV charger key) to the lock box, close the lock box, jumble the tumblers to secure the keys, and close the access door to the lock box. Please close both gates (to the main house and to the driveway) on the way out.

We would appreciate any feedback or suggestions on how to make your next stay even better or to provide better service for our next guests. For your convenience, you can find links to reserve the house again from either VRBO and AirBnb at <https://ABQcasita.com>

See you next time!

We have yet to meet anyone that wouldn't welcome back, so we hope to see you again. Some people book for months at a time (at a significant discount), but doing so is difficult. If even one person has a few days in the desired time slot, any extended stay would need to be interrupted to accommodate the existing reservation. Please book early. Also note that due to difficulty with the AirBnB software, reservations for the International Balloon Fiesta held the first full weekend (starting Friday) of October for ten days is only available for on-line reservation through VRBO. If you have visited us, you know how to get a hold of us, so feel free to contact us directly. Travel safely!